

Jakarta EE: Community Power and Progress

@JBCNConf, July 2022

Tanja Obradović
Jakarta EE Program Manager
Eclipse Foundation



JAKARTA® EE

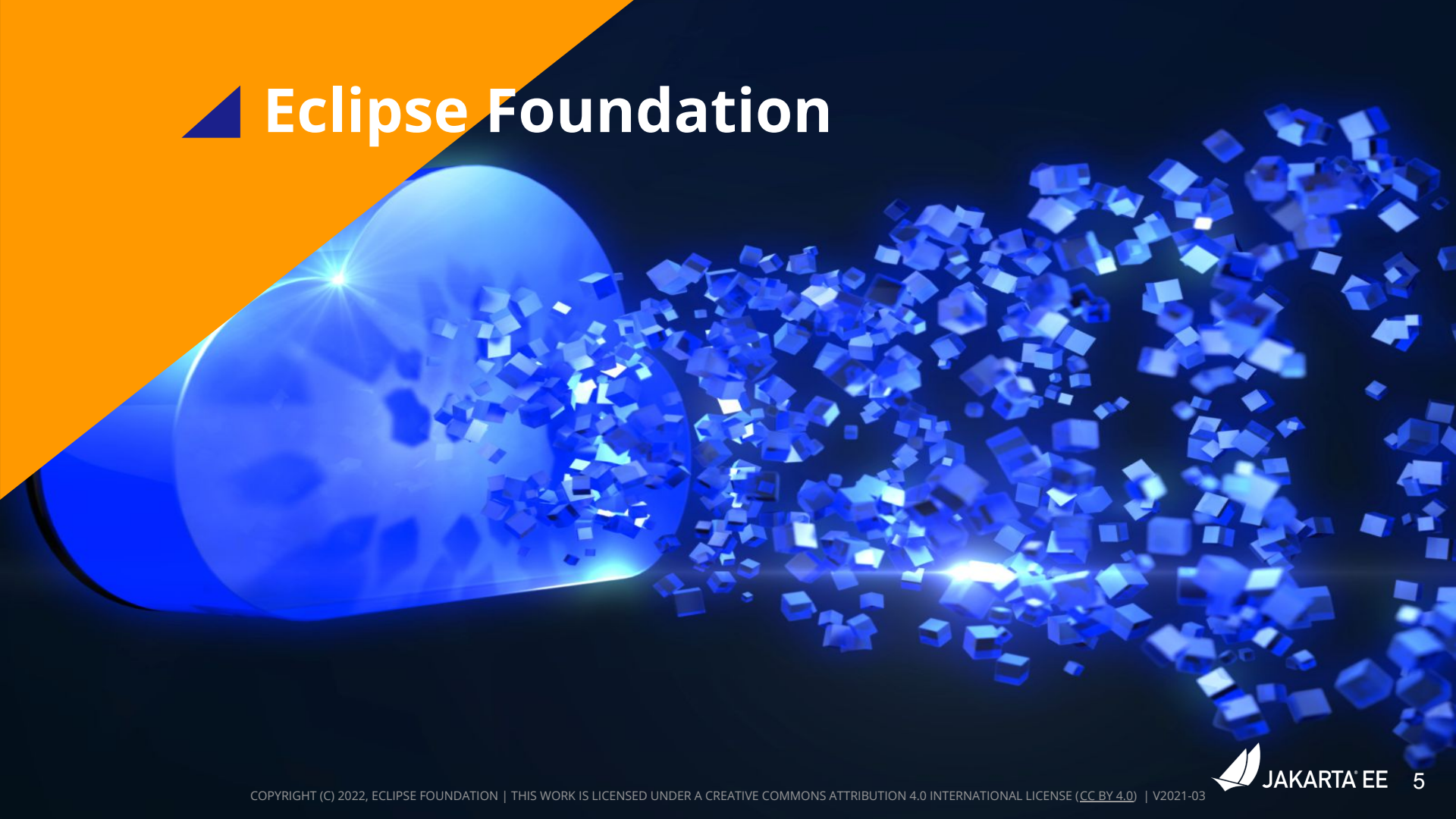
Community: Java EE and Jakarta EE

JCP - > Java EE

JESP -> Jakarta EE



Eclipse Foundation



Eclipse Foundation by the Numbers

www.eclipse.org



▲ Jakarta EE Working Group



Jakarta EE Working Group

An Industry Consortium

**Builds the
community**

**Approves
Specifications**

**Drives the
Jakarta EE
brand**

**Establishes
the technical
roadmap**

**Ensures
compatibility**

Jakarta EE at the Eclipse Foundation

www.jakarta.ee

25

(35% Growth
from 2021)

Member
Organizations

~175

Committers

55

(18% Growth
from 2021)

Open Source
Projects

154

Git
Repositories

~76M

(18% Growth from
2021)

Lines of Codes

The background features a large, glowing cluster of blue cubes on the right side, with several bright light rays emanating from its center. On the left, a solid orange triangle is partially visible, and a horizontal blue light streak cuts across the middle of the frame.

What's New?

What's New - Jakarta EE Overview

- Three **successful releases** and [Jakarta EE 10](#) on its way as a major new release!
- A series of **webinars, talks**, and popular **JakartaOne Livestreams**
- Growing list of **Jakarta EE compatible implementations!**
- Growing list of **Jakarta EE members!**
- A community-driven vision with the **new Jakarta EE projects and specifications**

▲ Jakarta EE Releases

Jakarta EE to Date!



Jakarta EE Members and Compatible Products



Backed by Java Industry Leaders

Strategic Members

FUJITSU

ORACLE

IBM

Tomitribe
join the tribe

payara

Participating Members

THUNISOFT
华宇

Pivotal

Liferay

TmaxSoft

vsettan
华胜信泰

iJUG
Verbund

Apusic
固若长城 睿比世界

vmware

BES 宝兰德
BESSYSTEM

東方通 | TongTech®

webtide

jadeva GmbH
a small step for your team -
a big step for your company!

LJC

AsialInfo
亚信科技

OMNI
I.S.A.

Enterprise Members

PRIMETON · 普元

INFORS 中创中间件®

Red Hat

Microsoft

Guest Members

THE APACHE®
SOFTWARE FOUNDATION
apache.org

ISTANBUL
Java User Group

SOUJava
sociedade de usuários java

Jakarta EE Compatible Products



<https://jakarta.ee/compatibility/>

List of Compatible Products by Releases

[Jakarta EE 10
Compatible Products](#)

[Jakarta EE 9.1
Compatible Products](#)

[Jakarta EE 9
Compatible Products](#)

[Jakarta EE 8
Compatible Products](#)



Compatible Products list is continuously growing!



2021 Jakarta EE Compatible Products

Total of **23** Platforms and **14** Web Profiles

14 Jakarta EE 8 platform compatible products
and 6 Jakarta EE 8 web profiles

3 Jakarta EE 9 platform compatible products and
4 Jakarta EE 9 web profiles

5 Jakarta EE 9.1 platform compatible products
and 4 Jakarta EE 9.1 web profiles

2022 Jakarta EE Compatible Products

Total of **33** Platforms and **14** Web Profiles

18 Jakarta EE 8 platform compatible products
and 6 Jakarta EE 8 web profiles

6 Jakarta EE 9 platform compatible products and
4 Jakarta EE 9 web profiles

9 Jakarta EE 9.1 platform compatible products
and 4 Jakarta EE 9.1 web profiles

Note: the 2022 table lists the Jakarta EE compatible products as of end of Q2

The background features a large, glowing cluster of blue cubes on the right side, with light rays emanating from its center. Below the cubes, several curved, parallel lines sweep across the bottom of the frame. The top-left corner is a solid orange triangle. The text 'Jakarta EE 9' is displayed in white on the left side.

Jakarta EE 9

Jakarta EE 9

<https://jakarta.ee/release/9>

Released in fall 2020

- Move to *jakarta* namespace (referred to as the “big bang” approach);
- No new specifications, apart from specifications pruned from Java SE 8 where appropriate; And Java SE 8 support.



Jakarta EE 9 Specifications

Jakarta EE 9 Platform

Jakarta EE 9 Web Profile



* Optional

▲ Jakarta EE 9.1: A Platform for Innovation

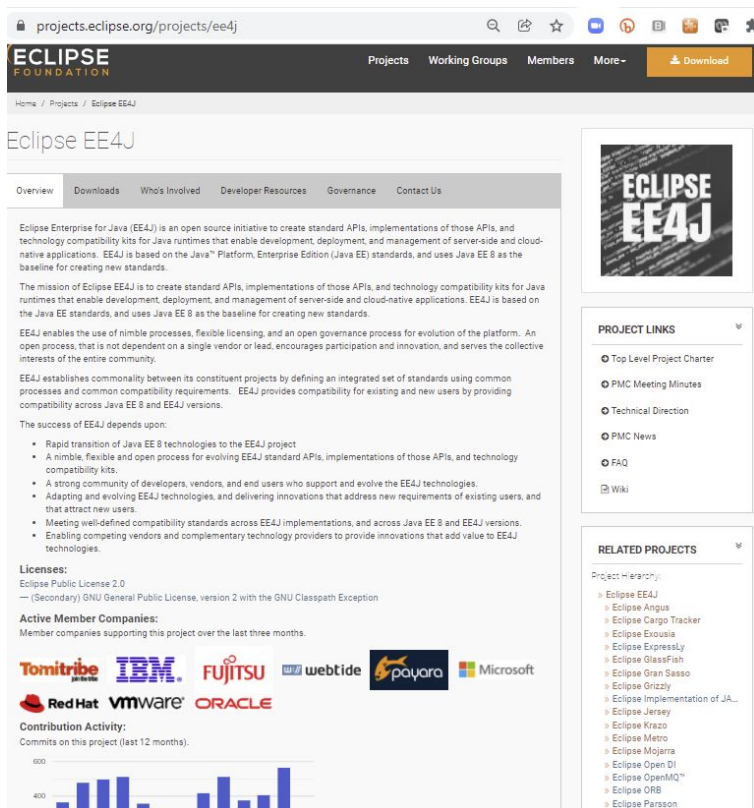
<https://jakarta.ee/release/9.1/>

Jakarta EE 9.1 Release includes:

- Java SE 11 support
- Multiple compatible implementations used for the ratification of the final specs!
 - [compatibility certification request for Jakarta EE 9.1 release](#)



EE4J new projects emerging



The screenshot shows the Eclipse EE4J project page on projects.eclipse.org. The page includes a navigation bar with links to Projects, Working Groups, Members, and More, along with a Download button. The main content area is titled 'Eclipse EE4J' and contains several sections: Overview, Downloads, Who's Involved, Developer Resources, Governance, and Contact Us. The Overview section describes the mission of Eclipse EE4J, which is to create standard APIs, implementations of those APIs, and technology compatibility kits for Java runtimes. It also mentions the success of EE4J depends upon several factors, including rapid transition of Java EE 8 technologies, a nimble and open process for evolving EE4J standard APIs, a strong community of developers, vendors, and end users, and meeting well-defined compatibility standards. The page also lists active member companies (Tomitribe, IBM, Fujitsu, webtide, payara, Microsoft, Red Hat, VMware, Oracle) and contribution activity (commits over the last 12 months).



Eclipse Exousia, 2021-04-21

Eclipse Parsson, 2021-06-03

Eclipse Angus, 2021-07-14

Eclipse Open DI, 2021-11-03

Eclipse Gran Sasso, 2021-12-07

Eclipse ExpresLy, 2022-01-12

Jakarta Config, 2021-06-03

Jakarta RPC, 2022-01-19

Jakarta Data, proposal

The background features a dark blue space filled with a large, glowing cluster of small blue cubes. A bright blue light source is positioned within this cluster, creating a horizontal lens flare that spans the width of the image. Below the cube cluster, several curved, glowing blue lines sweep across the dark floor. In the top-left corner, there is a large orange triangle. The text 'Jakarta EE 10' is displayed in a bold, white, sans-serif font, partially overlapping the orange triangle and the blue cube cluster.

Jakarta EE 10



New Release!

JAKARTA EE 10

OPEN, COMMUNITY-DRIVEN INNOVATION
DEFINING THE FUTURE OF CLOUD NATIVE
JAVA TECHNOLOGIES



Community Driven

Modernized

Simplified

Lightweight

<https://jakarta.ee/release/10/>

Jakarta EE 10: Open **community-driven Innovation** for driving the future of Cloud Native Java technologies

<https://jakarta.ee/release/10/>

MODERNIZED



The Jakarta EE 10 release provides new functionality in over 20 component specifications.

This release enables builders of modern cloud native Java applications to develop and deploy Jakarta EE 10 applications on Java SE 11 as well as Java SE 17, the most current LTS release of Java SE. This allows developers to take full advantage of new features including the modular system introduced in Java SE 9 and supported in Java SE 11

SIMPLIFIED



With Jakarta EE 10, application development is made simpler by supporting the broader use of additional annotations

This makes it easier to build modularized applications and offers improved integration across component APIs. Ultimately, Jakarta EE 10 helps developers more easily implement applications with modern security requirements, remove deprecated APIs, and maintain high levels of compatibility with prior Jakarta EE releases.

LIGHTWEIGHT



Jakarta EE 10 defines a new profile specification with Jakarta EE Core Profile 10. The “Core Profile” enables the development of lightweight and modernized Java applications.

The new Core Profile provides a subset of Jakarta EE specifications that target smaller runtimes suitable for microservices development with lightweight runtimes. This includes an innovative new CDI-Lite specification for building lightweight Jakarta EE applications.

Jakarta EE 10 Specifications



Jakarta EE 10 Specifications

JAKARTA EE 10 PLATFORM

JAKARTA EE 10 WEB PROFILE

JAKARTA EE 10 CORE PROFILE

	Expression Language 5.0	Server Pages 3.1	
Authorization 2.1	Authentication 3.0	CDI 4.0	CDI Lite 4.0
Activation 2.1	Concurrency 3.0	WebSocket 2.1	JSON Binding 3.0
Batch 2.1	Persistence 3.1	Bean Validation 3.0	Annotations 2.1
Connectors 2.1	Faces 4.0	Debugging Support 2.0	Interceptors 2.1
Mail 2.1	Security 3.0	Enterprise Beans Lite 4.0	RESTful Web Services 3.1
Messaging 3.1	Servlet 6.0	Managed Beans 2.0	JSON Processing 2.1
Enterprise Beans 4.0	Standard Tag Libraries 3.0	Transactions 2.0	Dependency Injection 2.0



Updated



Not Updated



New

Why get involved?

Why Developers Should Get Involved!



Advance YOUR Career!

Learn from the BEST!



**What can you
help with?**

- **Marketing and Promotional work**
- **Technical Work**
- **Collateral work**

How to get involved?



Get Involved with Jakarta EE !

<https://jakarta.ee/community/get-involved/>

Become a Committer

Jakarta EE contributors are eligible to become committers. Becoming a committer can happen in a couple of ways: 1) For existing Jakarta EE projects, it happens through an election. After you have made contributions that demonstrate that you understand how the open source project works, a current committer on that project will initiate an election. Current committers must vote in the election; so creating a public record of high quality contributions that committers (and the community) can review is the most important part of this entire process. 2) Another option is to become a committer of a new Jakarta EE Specification project, by making initial contributions. The corresponding Project Management Committee (PMC) of the project nominates an initial set of committers for approval by the Executive Director (or his delegates).

If your employer is a member of the Jakarta EE Working Group, they've already signed the necessary paperwork and there is no paperwork for you to complete.

If your employer is not a member of the Jakarta EE Working Group, you will need to complete the following forms:



Jakarta EE Working Group Individual Participation Agreement



Employer Consent Agreement for Eclipse Foundation Specification Projects



How to Contribute

Select a Jakarta EE project of interest, join the project's mailing list and start communicating with the team.

Before starting to contribute, you need to make sure your paperwork is in order. When contributing as an individual, login to your EF account and sign the Eclipse Contributor Agreement. You can then work with the project team to contribute your work. Visit the Eclipse Contributor Agreement page to learn more about the agreement. However, in the case your employer is already a member of the Jakarta EE Working Group, your employer has a Member Committer and Contributor Agreement in place that covers all their employees who are contributing, and you do not need to do anything!



Login to your EF account



How to contribute to



JAKARTA EE



All you need to start with:

Eclipse Contributor Agreement

That's all and it is free!



Stay Connected!





Jakarta EE Community Mailing List

Jakarta.ee-community is the mailing list for Jakarta EE community discussions. Subscribe to this list for all things Jakarta EE.

[Subscribe](#)

Jakarta EE Working Group Mailing List

Jakarta.ee-wg is the mailing list for the Jakarta EE Working Group. Subscribe to this list to share general information regarding Jakarta EE.

[Subscribe](#)

Project Mailing Lists

Want to get involved? Sign up to the Jakarta EE project mailing lists here.

[Mailing Lists](#)

Slack

Join the conversations on Jakarta EE slack workspace and see what the community members are up to.

[Join](#)

Updates

Receive updates from the Eclipse Foundation on Jakarta EE and other Eclipse projects, events and community announcements.

[Edit Preferences](#) - Or - [Create Account](#)

Newsletter

With a Jakarta EE-themed edition released each quarter, the Eclipse Foundation Community Newsletter is your destination for original articles about projects and key technologies.

[Subscribe](#)[View Archives](#)

Jakarta EE Community Calendar

Join the Jakarta EE Community Calendar to learn more about Jakarta EE-related plans.

[Subscribe](#)

Community Folder

Our public Community Folder features promotional resources and slides from past update calls and other community meetings.

[View](#)

Tech Talks Meet-Ups

Jakarta Tech Talks are both conference based and virtual webinars dedicated to the discussion and discovery of any cloud native Java projects, microservices projects, and technologies.

[Tech Talks](#)[Sign Up to Host](#)

Jakarta EE Specifications Calendar

Jakarta EE Specifications Calendar lists meetings dedicated to different Jakarta EE Specifications. Subscribe to the Jakarta EE Specifications Calendar to learn more about Specification-related plans.

[Calendar](#)

<https://jakarta.ee/connect/>

Be part of the Community!



Adopt a Spec

- Learn about the Adopt a Spec Program



Events

- Find the latest Cloud Native Java Events



JakartaOne Livestream

- Find the latest JakartaOne Livestream
- Find out how to host a JakartaOne Livestream in your own language



Stay Connected

- Find the Communication Channels



Tech Talk Meet-Ups

- Find the latest Jakarta Tech Talk
- Sign up to host a talk



Videos

- Watch the latest videos
- Subscribe to our Youtube channel

<https://jakarta.ee/community>

Follow us on social channels!



▲ JakartaOne Livestream in 2022



JakartaOne Livestream 2022

<https://jakartaone.org>

JakartaOne Livestream - German- June 30

<https://jakartaone.org/2022/german/>

JakartaOne Livestream - Chinese- August 31

<https://jakartaone.org/2022/chinese/>

JakartaOne Livestream - Japanese- September 16

<https://jakartaone.org/2022/japan/>

JakartaOne Livestream - Portuguese - September 29

<https://jakartaone.org/2022/portuguese/>

JakartaOne Livestream 2022
December 6

<https://jakartaone.org/2022/>

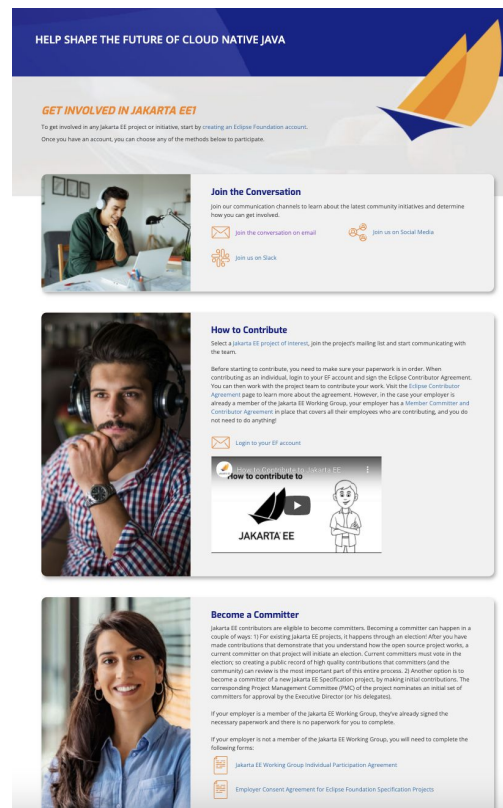
▲ Highlighting Our Community



Grow & Reward Committers and Contributors

- Promote **new contributors** on socials Facebook, Twitter and LinkedIn, and on the community news section of the Jakarta EE website.
- Congratulate **newly elected committers** on socials Twitter, LinkedIn and Facebook and also on the community news section of the Jakarta EE website.
- Recognize **the most prolific committers/contributors** to coincide with the JakartaOne Livestream
- Feature and promote one **Jakarta EE Committer's profile** per quarter on the Eclipse Foundation Community Newsletter

Learn more: <https://jakarta.ee/community/get-involved/>



HELP SHAPE THE FUTURE OF CLOUD NATIVE JAVA

GET INVOLVED IN JAKARTA EE

To get involved in any Jakarta EE project or initiative, start by creating an Eclipse Foundation account. Once you have an account, you can choose any of the methods below to participate.

Join the Conversation

Join our communication channels to learn about the latest community initiatives and determine how you can get involved.

Join the conversation on email | Join us on Social Media | Join us on Slack

How to Contribute

Select a Jakarta EE project of interest, join the project's mailing list and start communicating with the team.

Before starting to contribute, you need to make sure your paperwork is in order. When contributing as an individual, login to your EF account and sign the Eclipse Contributor Agreement. You can then work with the project team to contribute your work. Visit the Eclipse Contributor Agreement page to learn more about the agreement, however, in the case your employer is already a member of the Jakarta EE Working Group, your employer has a Member Contributor and Contributor Agreements in place that covers all their employees who are contributing, and you do not need to do anything!

Login to your EF account

How to contribute to

JAKARTA EE

Become a Committer

Jakarta EE contributors are eligible to become committers. Becoming a committer can happen in a couple of ways. 1) For existing Jakarta EE projects, it happens through an election. After you have made contributions that demonstrate that you understand how the open source project works, a current committer on that project will initiate an election. Current committers must vote in the election, so creating a public record of high quality contributions that committers (and the community) can review is the most important part of this entire process. 2) Another option is to become a committer of a new Jakarta EE Specification project, by making initial contributions. The corresponding Project Management Committee (PMC) of the project nominates a initial set of committers for approval by the Executive Director (or his delegates).

If your employer is a member of the Jakarta EE Working Group, they've already signed the necessary paperwork and there is no paperwork for you to complete.

If your employer is not a member of the Jakarta EE Working Group, you will need to complete the following forms:

- Jakarta EE Working Group Individual Participation Agreement
- Employer Consent Agreement for Eclipse Foundation Specification Projects

Recognizing New Contributors and Committers

Top 3 Eclipse GlassFish Contributors

- | | |
|---|-----------------|
| 1 | Lukas Jungmann |
| 2 | Piotrek Zygielo |
| 3 | Arjan Tijms |



Top 3 Jakarta EE Specification Contributors

- | | |
|---|----------------|
| 1 | Scott M Stark |
| 2 | Lukas Jungmann |
| 3 | Scott Kurz |



Top 3 Jakarta EE TCK Contributors

- | | |
|---|----------------|
| 1 | Gurunandan Rao |
| 2 | Alwin Joseph |
| 3 | Scott Marlow |



Top 3 Newcomer Jakarta EE Specification Contributors

- | | |
|---|---------------|
| 1 | Petr Aubrecht |
| 2 | Andrew Rouse |
| 3 | Manfred Riem |



The background features a dark blue space filled with a large, glowing cluster of small blue cubes. A bright blue light beam passes through the center of this cluster. In the bottom left, several curved blue lines sweep across the frame. Two orange triangles are positioned in the top left and middle left areas.

Join Jakarta EE Working Group

Join Jakarta EE Working Group!

<https://jakarta.ee/membership/>



Join the Jakarta EE Working Group

Any individual or organization with an interest in advancing Jakarta EE can join the Jakarta EE Working Group.

 Review the Jakarta EE Working Group Charter, then  contact us.

For more information, explore the [Jakarta EE website](https://jakarta.ee/about/working-group/).

<https://jakarta.ee/about/working-group/>

THANK YOU!



@TanjaEclipse
tanja.obradovic@eclipse-foundation.org